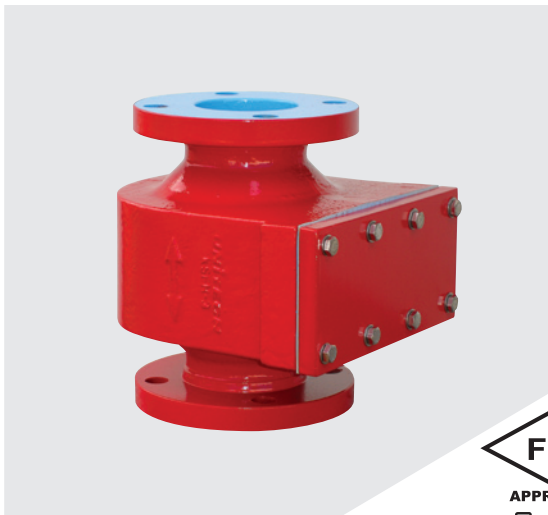


FLAME ARRESTER Section 2.2

EXPLOSION PROOF IN-LINE FLAME ARRESTER

KSFH TYPE FLAME ARRESTER



Benefits

- Meet USCG, IMO MSC/Circ,677 & EN 12874 requirements
- Designed for Explosion & Deflagration proof
- Maximum Capacity & Minimum Pressure drop
- Capability of Bi-directional flow & flame arresting
- Quick & Easy removable element
- Very easy cleaning & maintenance
- Available vertical & horizontal installation
- No need forced push out pipe-lines for removing element
- High quality corrosion & chemical resistance

■ Introduction ■

The model KSFH inline flame arrester is designed, manufactured and tested according to API 2000, British Standard Specification Code BS 7244, EN 12874 and FM(Factory Mutual) approved.

The unit are passive devices with no moving parts.

They prevent the propagation of flame from the exposed side of the unit to the protected side by the use of a 316L stainless steel crimped metal ribbon type flame cell element.

This construction produces a matrix of uniform opening that are carefully constructed to quench the flame by absorbing the heat.

This provides an extinguishing barrier to the ignited vapor mixture.

The KSFH flame arresters have specifically designed heat transfer characteristics for slow moving flames and low medium pressure fronts (low to medium deflagration).

Inline flame arresters can be installed either vertically or horizontally within a designated distance from the potential ignition extras.

The standard flame cell is suitable for NEC group D or IEA IIA gases. Cells for other gas groups are available as additional extras.

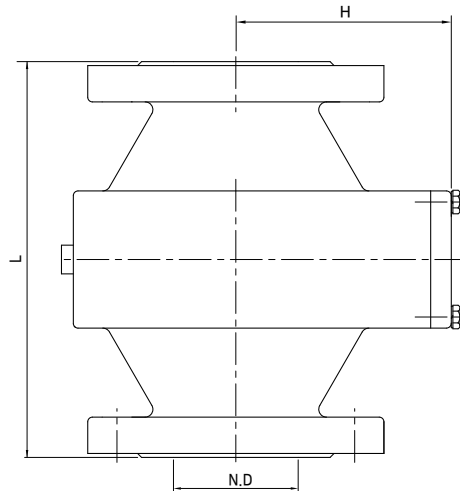
The flame arresters are available with either aluminum, nodular iron, cast steel, 304SSss, 316SS and 316LSS housings, Iron and steel housings are supplied epoxy coated.

ISO 9001 Registered

FLAME ARRESTER Section 2.2

EXPLOSION PROOF IN-LINE FLAME ARRESTER

KSFH TYPE FLAME ARRESTER



Dimension Table

									Unit = mm
Size	1"	2"	3"	4"	6"	8"	10"	12"	Other Size
N.D	25	50	80	100	150	200	250	300	Available on request
L	190	215	245	260	290	300	350	350	
H	90	120	125	175	180	215	310	310	

Note: Standard flanges are ANSI 150lb and other connections are available upon request.

Materials of Construction

	Standard Design	Special Design	
Body	C.I	Cast C.S	S.S & AL
Element Ring	C.S or S.S	S.S	S.S
Element	Aluminium or Stainless Steel		
Standard Coating	In-Out side Epoxy 250 Micron except for S.S & AL Part.		

Note: CI - Cast Iron, S.S - Stainless Steel, C.S - Carbon Steel, AL - Aluminium