

## EMERGENCY VENT COVER Section 3.1

### EMERGENCY PRESSURE RELIEF VENT COVER

#### KSEP TYPE EMERGENCY VENT COVER



#### According to API 2000 Code

The series KSEP is designed to provide emergency pressure relief for storage tanks when exposed to overpressures that are not handled by standard tank vents. These vents provide the capacity to meet API standard 2000 for emergency venting due to fire exposure when properly sized. These covers also provide quick easy access for tank inspection and maintenance.

#### ■ Vent Operation ■

The KSEP emergency pressure relief vent provides pressure relief only. Vacuum relief must be supplied by normal venting devices, or use our KSEV emergency pressure and vacuum relief vent covers. When excessive pressure builds within the storage tank the KSEP series emergency pressure relief vent begin to open at a predetermined set pressure relieving excessive pressure. When the overpressure has dissipated the cover reseal onto the base.

#### ■ Construction ■

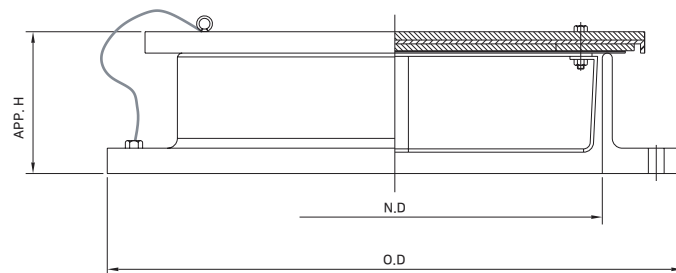
The series KSEP is available in several materials that are corrosion resistant to most petroleum product applications. See Standard material of construction table for available material. Predetermined setting range is from a minimum of 50mm W.C to a maximum of 700mmW.C. Sizes are 400, 450, 500 and 600mm with flange drilling according to ANSI 150lb or API650.

ISO 9001 Registered

# EMERGENCY VENT COVER Section 3.1

## EMERGENCY PRESSURE RELIEF VENT COVER

### KSEP TYPE EMERGENCY VENT COVER



**Dimension Table**

Unit = mm

		16"	18"	20"	24"
N.D		400	450	500	600
O.D	API 650	597	635	660	762
	ANSI 150#	597	635	698	813
APP. H	MIN.	110	123	132	158
	MAX.	150	168	195	226

**Materials of Construction**

ITEM NO.	COMPONENT	BODY	ALUMINUM	C.S	304 S.S	316 S.S
		TRIM	304 S.S	304 S.S	304 S.S	316 S.S
1	BODY		ALUMINUM	C.S	304 S.S	316 S.S
2	COVER			EGI		304 S.S
3	GUIDE		304 S.S	304 S.S	304 S.S	304 S.S
4	DIAPHRAGM			TEFLON		
5	EARTH WIRE		304 S.S	304 S.S	304 S.S	304 S.S
6	BOLT/NUT		304 S.S	304 S.S	304 S.S	304 S.S
7	LOADING W'T			STEEL		